

ULTIMAKER 2+



TABLE OF CONTENTS

SPARE PARTS ULTIMAKER 2+

#Frame	3
#1685 Axis Pack	5
#1686 Electronics Pack	7
#1687 Controller Pack	8
#Pulley	10
#1689 Bearing Pack	11
#1690 Belts Pack	12
#Nuts & Bolts	13
#Heated Bed	18
#Print Head	20
#1696 Bowden Pack	23
#Motors	24
#1698 End Stop Pack	25
#1699 Fan Pack	26
Power Supply Unit	27
Additional	28

SPARE PARTS ULTIMAKER 2+

FRAME

1156	Z-shaft Cap Bottom	2x
1230	Front Panel UM2	1x
1231	Back Panel UM2	1x
1232	Left Panel UM2	1x
1233	Right Panel UM2	1x
1235	Top Panel UM2	1x
1240	Main Board Electronics Cover	1x
1251	Ulticontroller Electronics Cover	1x
1273	Cable Cover	2x
2282	Print Table Back Cover	1x
2294	Short Reel Holder	1x



1156 Z-shaft Cap Bottom



1230 Front Panel UM2



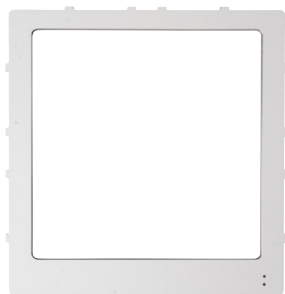
1231 Back Panel UM2



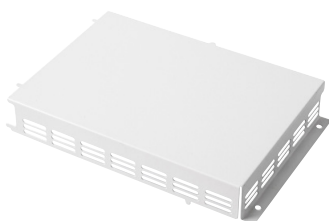
1232 Left Panel UM2



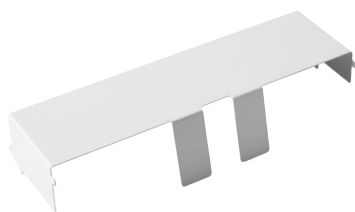
1233 Right Panel UM2



1235 Top Panel UM2+



1240 Main Board Electronics Cover



1251 Ulticontroller Electronics Cover



1273 Cable Cover



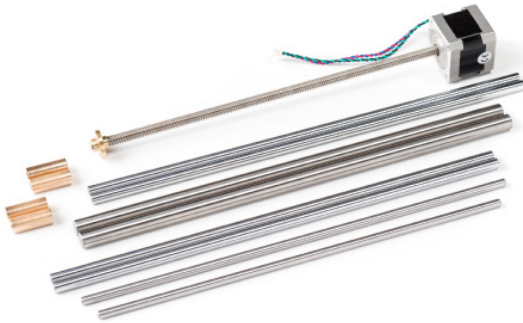
2282 Print Table Back Cover



2294 Short Reel Holder

SPARE PARTS ULTIMAKER 2+

#1685 AXIS PACK



1011	Y-linear shaft	2x
1012	X-linear shaft	2x
1056	Sintered Bushing	4x
1159	Z-Motor with Trapezoidal Lead Screw	1x
1169	Z-linear Shaft	2x
1172	Print Head Shaft X	1x
1173	Print Head Shaft Y	1x



1011 Y-linear shaft



1012 X-linear shaft



1056 Sintered Bushing



1159 Z-Motor with Trapezoidal Lead Screw



1169 Z-linear Shaft



1172 Print Head Shaft X



1173 Print Head Shaft Y

SPARE PARTS ULTIMAKER 2+

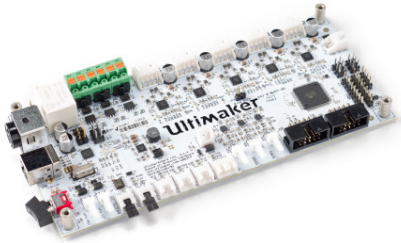
#1686 ELECTRONICS PACK

1315 Jumper

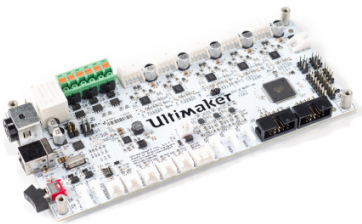
2x

1546 Main Board v2.1.4.

1x



1315 Jumper



1546 Main Board v2.1.4.

SPARE PARTS ULTIMAKER 2+

#1687 CONTROLLER PACK



1171	Double flat Cable 10 Wire	1x
1244	Knob Front UM2	1x
1245	Knob Housing UM2	1x
1247	OLED Display UM2	1x
1249	Ulticontroller Board	1x
1287	Washer M7	1x
1354	ISO 724 Hex nut M7	1x
9427	SD card + UM Sticker Assembly	1x



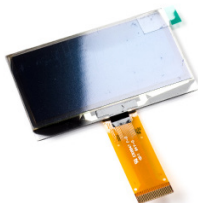
1171 Double flat Cable 10 Wire



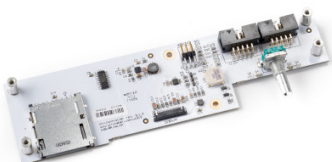
1244 Knob Front UM2



1245 Knob Housing UM2



1247 OLED Display UM2



1249 Ulticontroller Board

SPARE PARTS ULTIMAKER 2+

#1687 CONTROLLER PACK



9427 SD card + UM Sticker Assembly

SPARE PARTS ULTIMAKER 2+



1165	Timing Pulley 5mm Shaft GT2	2x
1166	Timing Pulley 8mm Shaft GT2	8x
1167	Timing Pulley Double 8mm Shaft GT2	1x
1211	Set screw	11x



1165 Timing Pulley 5mm Shaft GT2



1166 Timing Pulley 8mm Shaft GT2



1167 Timing Pulley Double 8mm Shaft GT2



1211 Set screw

SPARE PARTS ULTIMAKER 2+

#1689 BEARING PACK



1065	Linear Bearing LM6LUU	2x
1170	Square Flanged Linear Bearing LMK12LUU	2x
1220	Ball Bearing F688-2RS	8x



1065 Linear Bearing LM6LUU



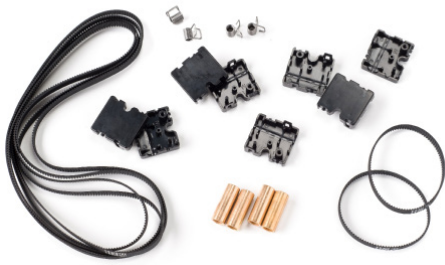
1170 Square Flanged Linear Bearing LMK12LUU



1220 Ball Bearing F688-2RS

SPARE PARTS ULTIMAKER 2+

#1690 BELTS PACK



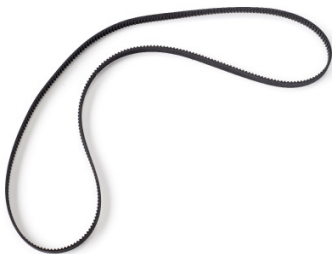
1056	Sintered Bushing	4x
1188	Timing Belt GT2 200	4x
1189	Timing Belt GT2 610	2x
1168	Sliding Block Spring	4x
1255	Sliding Block Half UM2	8x



1056 Sintered Bushing



1188 Timing Belt GT2 200



1189 Timing Belt GT2 610



1168 Sliding Block Spring

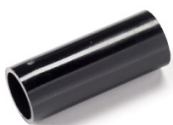


1255 Sliding Block Half UM2

SPARE PARTS ULTIMAKER 2+

NUTS & BOLTS

1176	Spacer 8.2x10x5	2x
1177	Spacer 8.2x10x10	4x
1178	Spacer 8.2x10x25	1x
1200	ISO 7380 M3X8	8x
1201	Washer M3	8x
1202	ISO 7380 M3x10	8x
1203	ISO 7380 M3x12	14x
1204	ISO 7380 M3x16	40x
1205	ISO 7380 M3x14	4x
1206	ISO 7380 M3x20	1x
1207	ISO 7380 M3x25	12x
1209	Nut M3	5x
1211	Set Screw M4x4	11x
1213	DIN 562 Square Nut M3 A2	36x
1214	ISO 7040 Nut M3 prev. torque A2	12x
1242	Spacer 3.2 x 6x 10	4x
1287	Washer M7	1x
1348	ISO 7380 M3x4 A2	4x
1351	ISO 4762 M2.5x10	2x
1354	ISO 724 Hex nut M7	1x
1362	Tap Fix 2.5x14 mm staal verzinkt bolkop porzidrive	8x
1521	Short Print Head Thumb Screw	4x
2317	M3x16 countersunk pozidrive	1x



1178 Spacer 8,2x10x25



1176 Spacer 8.2x10x5



1177 Spacer 8.2x10x10



1200 ISO 7380 M3X8



1201 Washer M3



1202 ISO 7380 M3x10



1203 ISO 7380 M3x12



1204 ISO 7380 M3x16



1205 ISO 7380 M3x14



1206 ISO 7380 M3x20



1207 ISO 7380 M3x25



1209 Nut M3



1211 Set Screw M4x4



1213 DIN 562 Square Nut M3 A2



1214 ISO 7040 Nut M3 prev. torque A2



1242 Spacer 3.2 x 6x 10



1287 Washer M7



1348 ISO 7380 M3x4 A2



1351 ISO 4762 M2.5x10



1354 ISO 724 Hex nut M7

COMING
SOON

1362 Tap Fix 2.5x14 mm steel countersunk
porzidrive



1521 Short Print Head Thumb Screw

COMING
SOON

2317 M3x16 countersunk pozidrive

SPARE PARTS ULTIMAKER 2+

HEATED BED



1153	Print Table Base Plate	1x
1154	Print Table Glass	1x
1243	Heated Bed Cable Clip	1x
1256	Build Platform Glass Retainer Back	2x
1257	Knurled Nut Platform	3x
1987	Table Clip Front-Left	1x
1988	Table Clip Front-Right	1x
9487	Print Table Heated Bed + Heated Bed Cable	1x



1153 Print Table Base Plate



1154 Print Table Glass



1243 Heated Bed Cable Clip



1256 Build Platform Glass Retainer Back



1257 Knurled Nut Platform



1987 Table Clip Front-Left



1988 Table Clip Front-Right

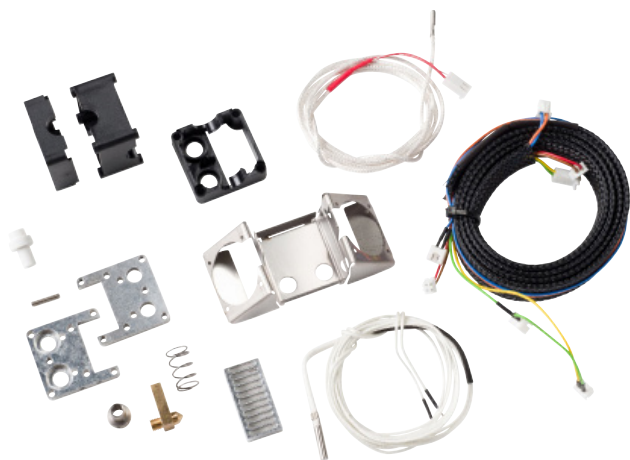


9487 Print Table Heated Bed + Heated Bed Cable

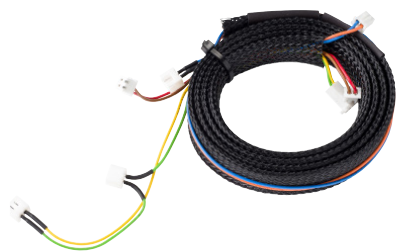


SPARE PARTS ULTIMAKER 2+

#PRINT HEAD



1186	Print Head Cable	1x
1306	Hot end holder bottom	1x
1307	Hot end holder top	1x
1308	Cooling Rib Hot End	1x
1310	Hot end Isolator	1x
1321	Print Head Middle	1x
1322	Print Head Bottom	1x
1748	Print Head Top	1x
2275	Isolator Spacer 9.4 mm	1x
2278	TFM Isolator Coupler	1x
2283	Heater Cartridge 24V 35W	1x
2284	Fan Bracket	1x
2288	PT100 B sensor glassfiber	1x
2313	Olsson Nozzle 0.40	1x
2322	Nozzle ring DIN 6796MV M3	1x



1186 Print Head Cable



1306 Hot end holder bottom



1307 Hot end holder top



1308 Cooling Rib Hot End



1310 Hot end Isolator



1321 Print Head Middle



1322 Print Head Bottom



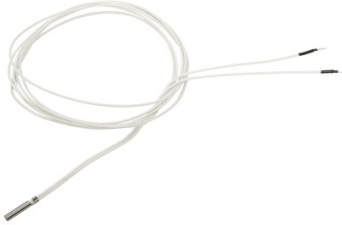
1748 Print Head Top



2275 Isolator Spacer 9.4 mm



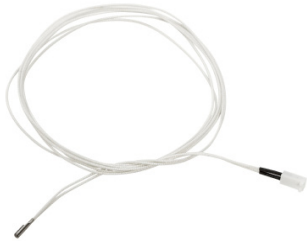
2278 TFM Isolator Coupler



2283 Heater Cartridge 24V 35W



2284 Fan Bracket



2288 PT100 B sensor glassfiber



2313 Olsson Nozzle 0.40

SPARE PARTS ULTIMAKER 2+

#1696 BOWDEN PACK

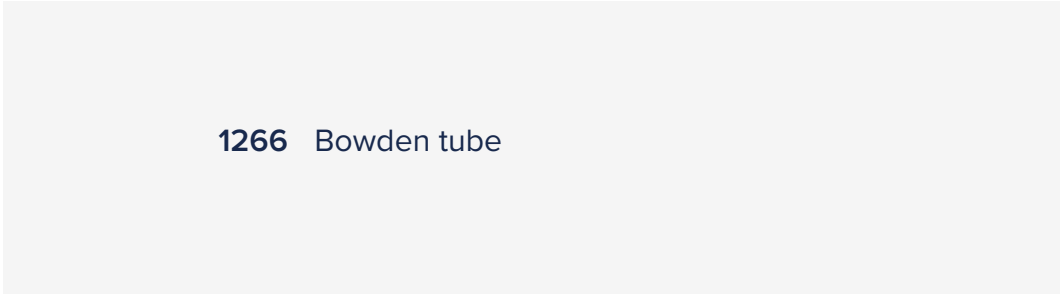
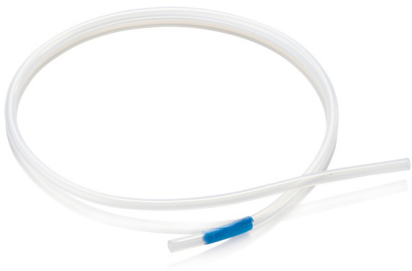
1069	Tube Coupling Collet	2x
1071	Clamp Clip	2x
1266	Bowden tube	1x



1069 Tube Coupling Collet



1071 Clamp Clip



1266 Bowden tube

SPARE PARTS ULTIMAKER 2+

#MOTORS



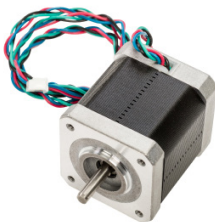
1241	Motor Spacer UM2	2x
2203	X,Y Motor	2x
9470	Feeder Motor	1x



1241 Motor Spacer UM2



2203 X,Y Motor



9470 Feeder Motor Assembly

SPARE PARTS ULTIMAKER 2+

#1698 END STOP PACK

1024	Limit Switch, Black Short Wire	1x
2204	Limit Switch, Blue Wire	1x
2205	Limit Switch, Red Wire	1x



1024 Limit Switch, Black Short Wire



2204 Limit Switch, Blue Wire



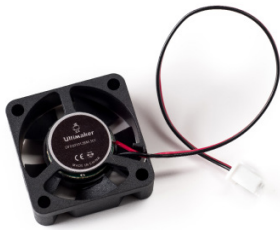
2205 Limit Switch, Red Wire



SPARE PARTS ULTIMAKER 2+

#1699 FAN PACK

1313	Model Cooling Fan 12VDC 0.1 A	2x
1330	Hot-end Cooling Fan 5VDC 0.08A	1x



1313 Model Cooling Fan 12VDC 0.1 A

1330 Hot-end Cooling Fan 5VDC 0.08A



1238 Power Adapter 24v-220W



1805 Power Cable EU Type C13



1806 Power Cable UK Type C13



1807 Power Cable AU Type C13



1808 Power Cable US Type C13



1161 LED Strip Cold White



1144 USB Cable



1226 Grease for Z-screw



1281 Braided Sleeve Clip



1227 Hex Key Screwdriver 2



1363 Ferrite Core

SPARE PARTS ULTIMAKER 2+

#ADDITIONAL



1400 Hex Key Wrench 1.5



1401 Hex Key Wrench 2



1402 Hex Key Wrench 2.5



2312 Olsson Nozzle 0.25



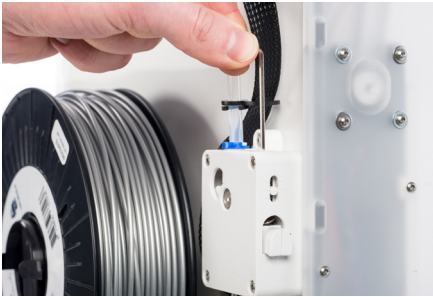
2314 Olsson Nozzle 0.6



2315 Olsson Nozzle 0.8

SPARE PARTS ULTIMAKER 2+

#ADDITIONAL



9472 Feeder UM2+UM2xrd+ Assembly