



Tulane MakerSpace

Basic Safety and Access

Basic Safety and Access



- **This presentation is intended to convey the basic rules of the Tulane MakerSpace.**
- **This will include general safety rules and policies, and is required to become an official “user” of the Space, along with a signed “Assumption of Risk” waiver form.**
- **Users will receive a personal RFID card that will allow them access to use the machines once they have completed training.**



- **“Assumption of Risk” waiver forms are available upon request, and must be returned to the Maker-In-Chief.**

Basic Safety and Access



➤ **MakerSpace Layout:**

- **The Tulane MakerSpace has several different zones based on the locations of the equipment and different levels of safety training.**
- **There are two floors to the Space: the Main Floor and the Mezzanine. Stairs to the Mezzanine are located to the left as you enter the main door.**

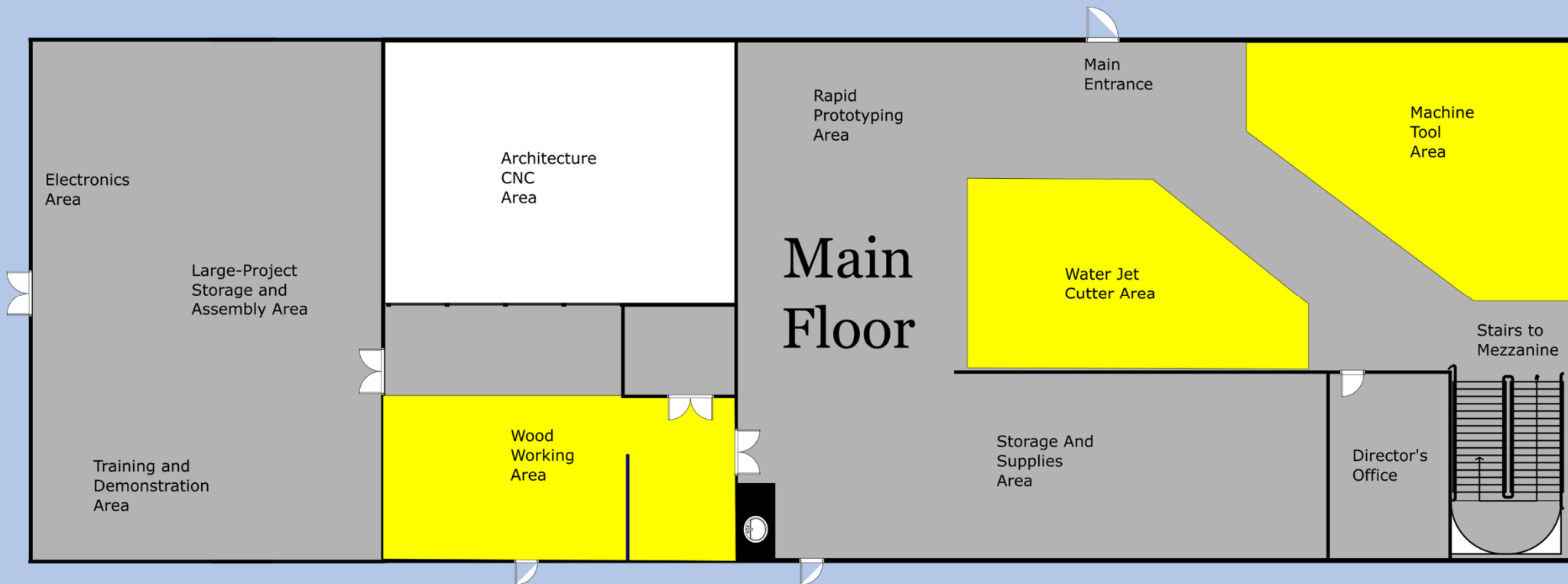


Basic Safety and Access



➤ MakerSpace Layout:

- **The main floor has woodworking, machining, and rapid prototyping tools, and a room for storing projects.**

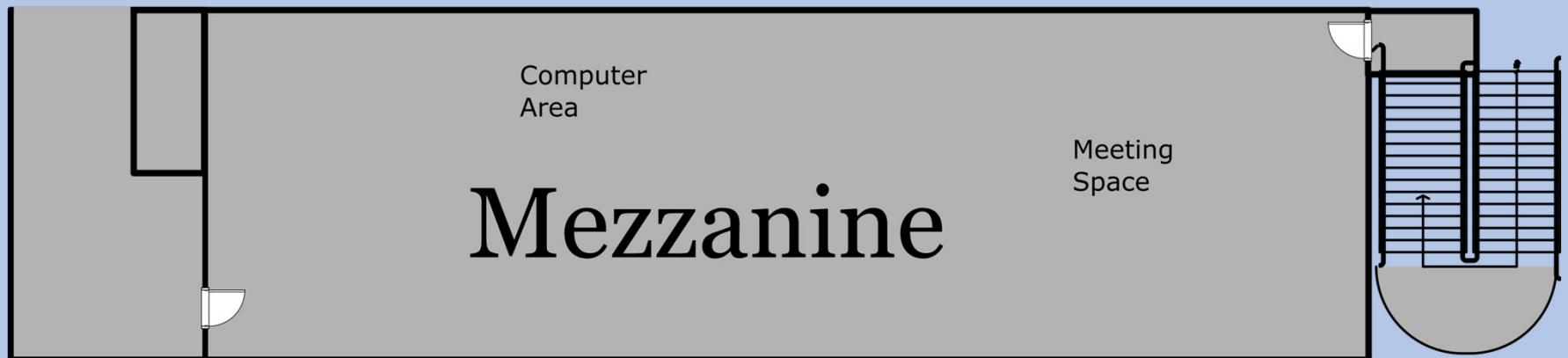


Basic Safety and Access



➤ **MakerSpace Layout:**

- **The upstairs (mezzanine) has meeting space, computers, and electronics areas.**



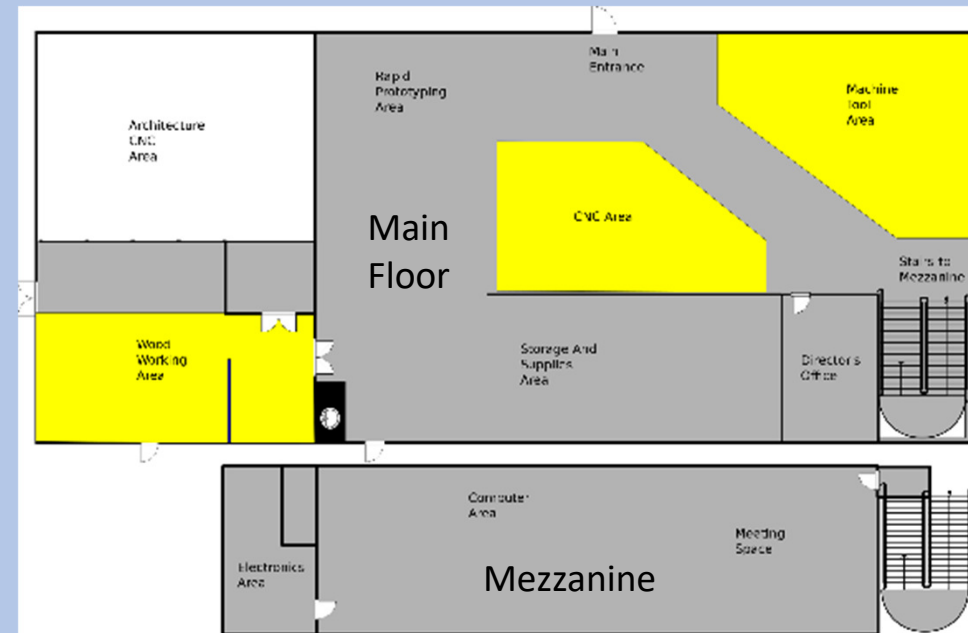
Basic Safety and Access



➤ MakerSpace Safety:

➤ There are two major rules for the overall MakerSpace:

1. **“Yellow zones”** require appropriate Personal Protective Equipment (PPE), while **“Gray zones”** are accessible to anyone.
2. No one is allowed to work in the MakerSpace alone. Everyone must adhere to the **“buddy system”**.



Metal-1 Training



➤ MakerSpace Safety:

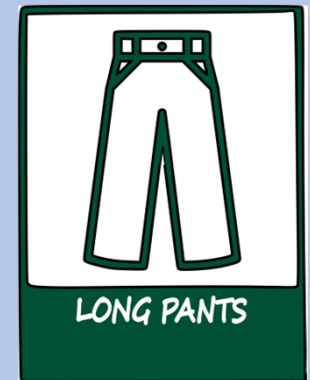
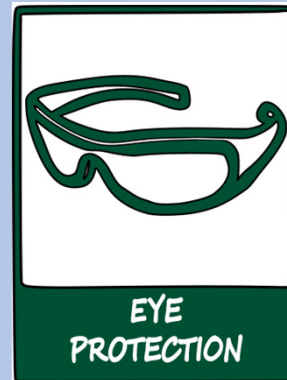
➤ Anyone standing in a yellow zone must be wearing:

* safety glasses

* long pants

* closed-toe shoes

➤ Long hair must be tied back, and no dangling clothes or jewelry are allowed.

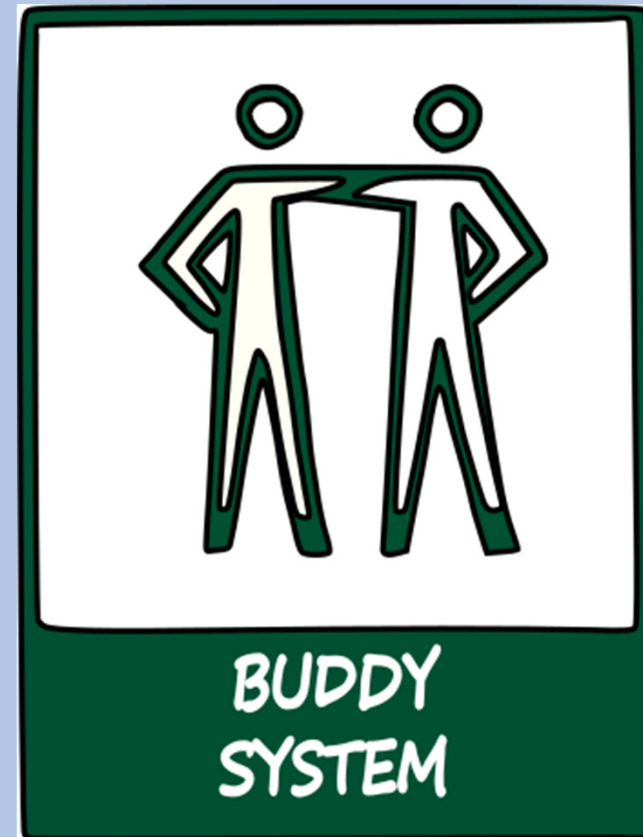


Metal-1 Training



➤ MakerSpace Safety:

- The “buddy system” requires that - at all times - **there has to be someone in the same room who can both hear and readily see you, and can come to your aid.**
- For example, someone in the Mezzanine is not a “buddy” for someone working on the Main Floor. Buddies must be able to immediately see and hear if a problem arises.



Basic Safety and Access



➤ **MakerSpace Safety:**

- **Maker Ninjas will always be available to help during normal operating hours.**
- **If you have questions or are not sure what you are doing, find the Maker Ninja on duty and ask them.**
- **Maker Ninjas are on site to help people with their projects or questions about tools and equipment.**

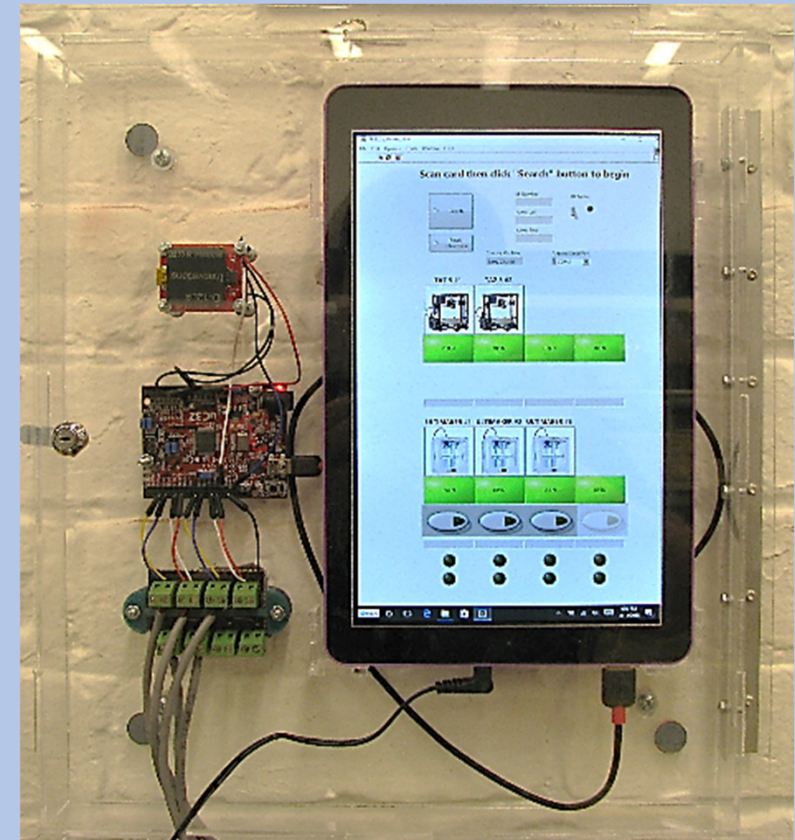


Basic Safety and Access



➤ **MakerSpace Safety:**

- **MakerSpace users will not be allowed to use machines on their own unless they have completed training on that machine.**
- **All machines are controlled by a card access system that will not allow a machine to be powered on unless the user has completed the appropriate training.**

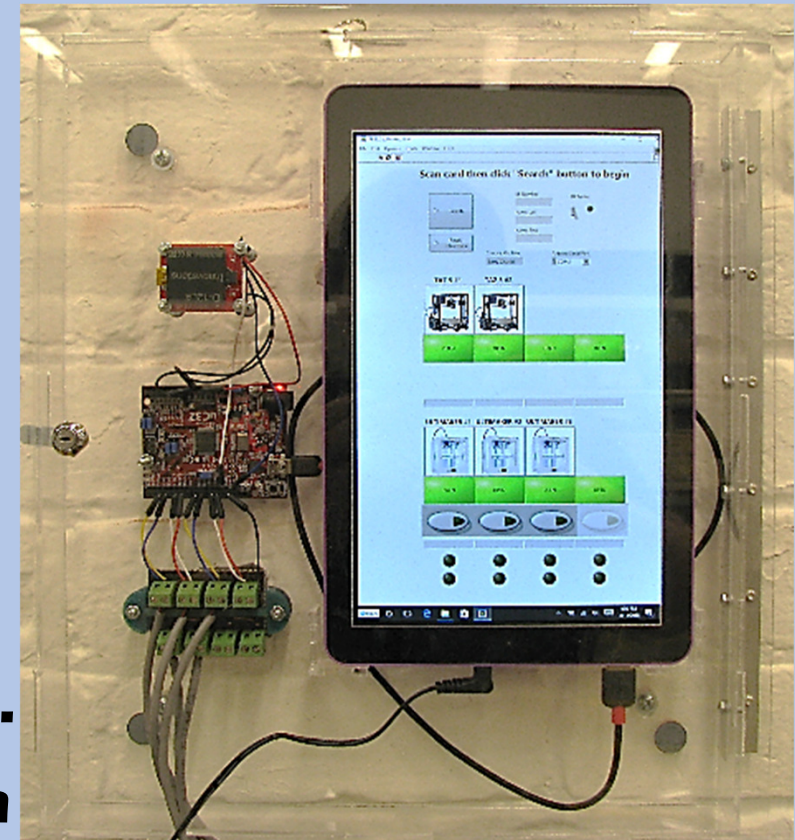


Basic Safety and Access



➤ MakerSpace Safety:

- **Trained users can scan their RFID card and select the machine(s) they want to use.**
- **Once a user logs on to a machine, they are responsible for that machine until they log out.**
- **Information on training modules can be found on the MakerSpace website under "Safety and Manuals".**
- **Some training modules will require a demonstration of proficiency.**



Basic Safety and Access



➤ MakerSpace Safety:

- If a piece of equipment is not functioning correctly, find a Maker Ninja and report it.
- Any malfunctioning equipment must be disconnected from the power outlet, and a locked container will be placed on the plug.
- **Do not attempt to use a machine that has been locked out, or has a “Danger” tag affixed to it.**

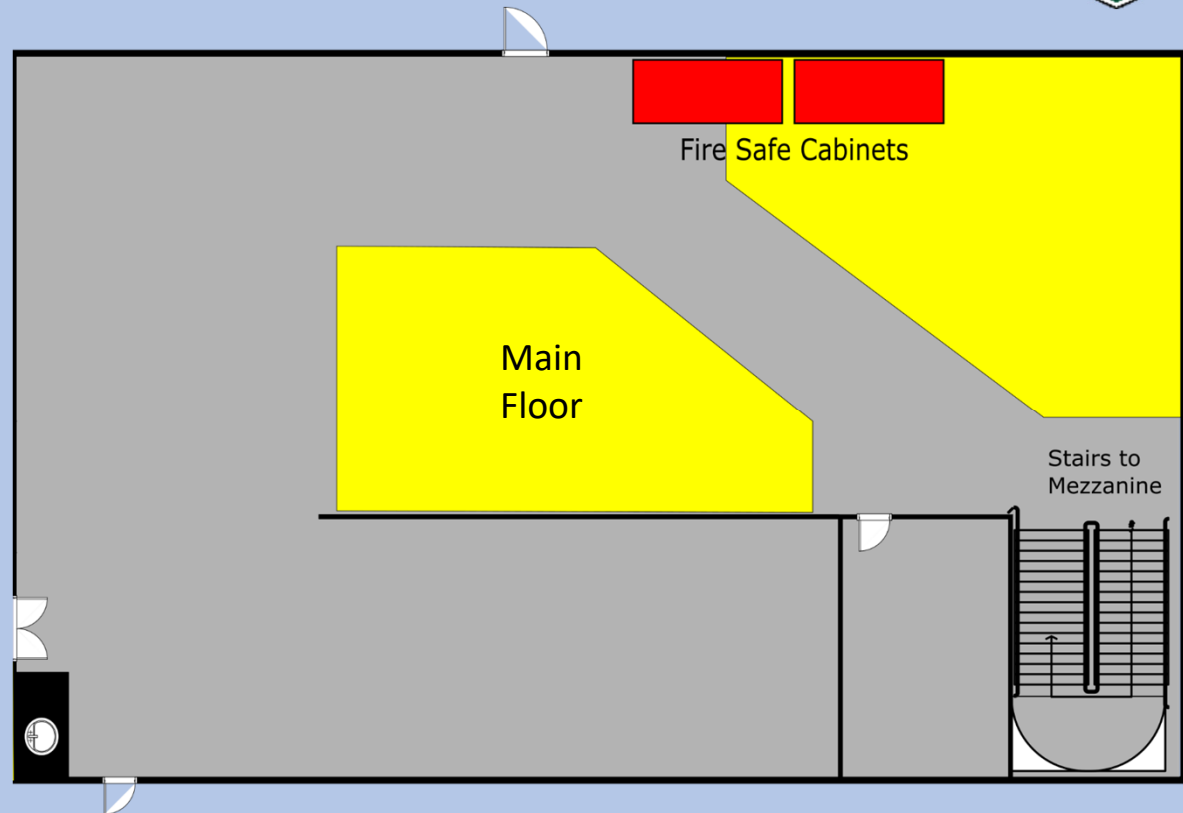


Basic Safety and Access



➤ **MakerSpace Safety:**

- **Any flammable materials must be stored in a fire-safe cabinet. This includes spray-paint and any other volatile organic compounds.**
- **There are two fire-safe cabinets in the MakerSpace.**



Basic Safety and Access



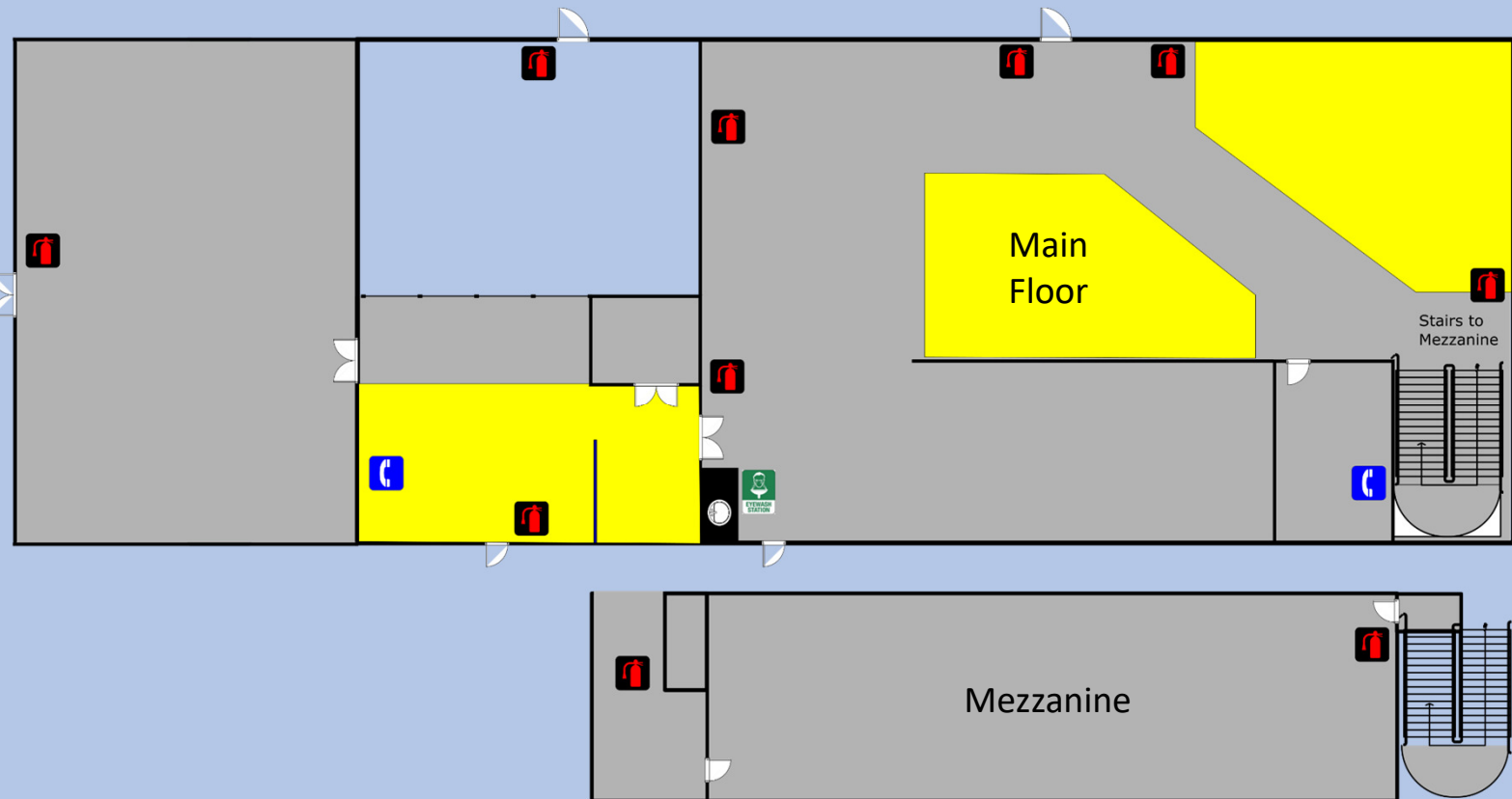
➤ MakerSpace Safety:

➤ Fire  extinguishers

➤ Eyewash station 

➤ Telephone 

➤ Emergency
dial **55911** or
504-865-5911

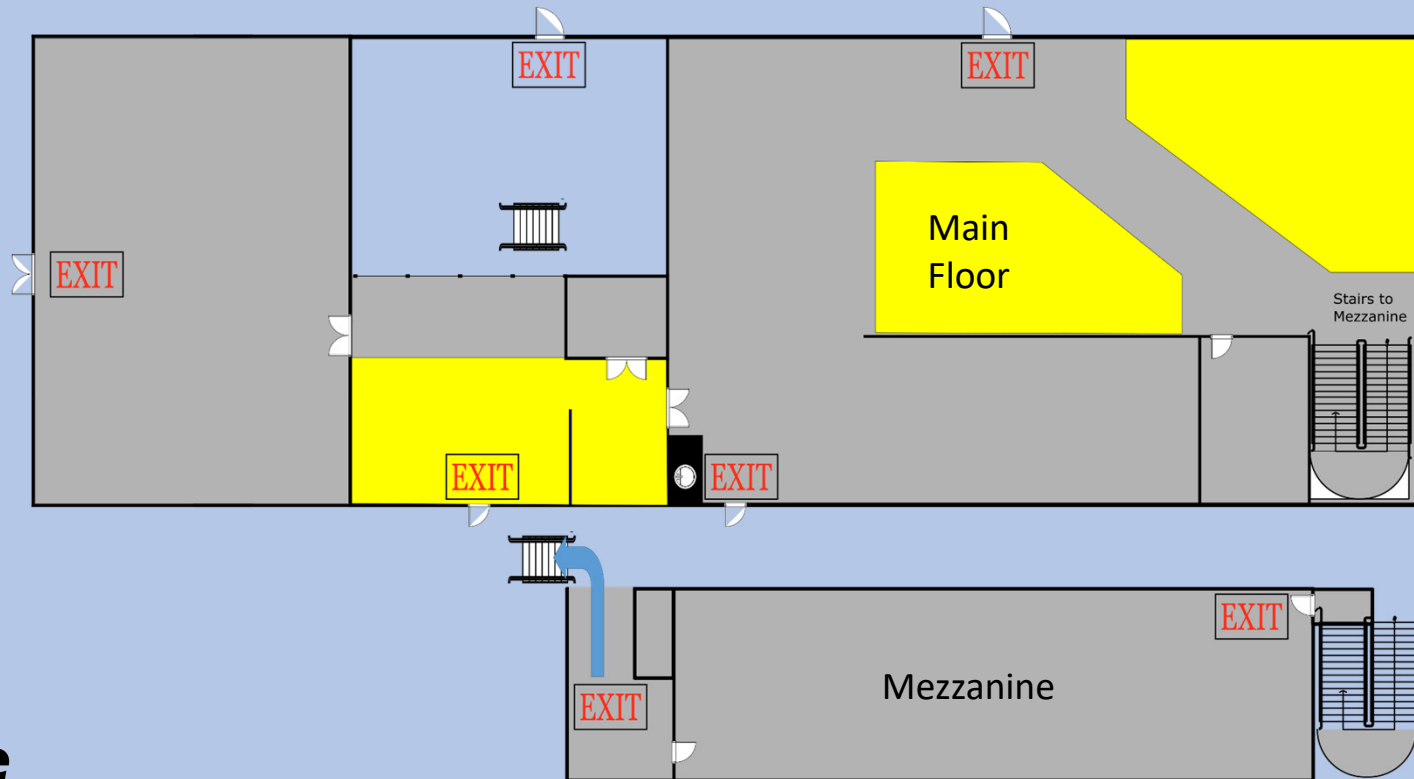


Basic Safety and Access



➤ MakerSpace Safety:

- In case of fire or other emergency, there are multiple exits to the building.
- The mezzanine has an exit and staircase on either side of the room.



Basic Safety and Access



- **Please remember: The Tulane MakerSpace is a student-operated facility.**
- **While we do everything in our power to train students to utilize equipment correctly, misuse can result in severe injuries.**
- **Please, don't ever try something you are not trained for, or attempt to use equipment in a manner that was not intended.**
- **If you don't know, please ask. If you need special assistance, please contact the Maker-In-Chief or a MakerSpace Advisor. We are happy to help with your crazy ideas, please ask us first.**

Basic Safety and Access

Click to continue



➤ **For more information on tools, equipment, and techniques, or to contact someone with questions:**

<http://makerspace.tulane.edu>

<http://makerspace.tulane.edu/index.php/People>

[http://makerspace.tulane.edu/index.php/Project Guides and Tutorials](http://makerspace.tulane.edu/index.php/Project%20Guides%20and%20Tutorials)