

# Owner's Manual & Safety Instructions

**Save This Manual** Keep this manual for the safety warnings and precautions, assembly, operating, inspection, maintenance and cleaning procedures. Write the product's serial number in the back of the manual near the assembly diagram (or month and year of purchase if product has no number). Keep this manual and the receipt in a safe and dry place for future reference.

REV 15d



## 6-1/2 GALLON PARTS WASHER



Visit our website at: <http://www.harborfreight.com>  
Email our technical support at: [productsupport@harborfreight.com](mailto:productsupport@harborfreight.com) **ITEM 62743**

When unpacking, make sure that the product is intact and undamaged. If any parts are missing or broken, please call 1-888-866-5797 as soon as possible.

Copyright© 2015 by Harbor Freight Tools®. All rights reserved.






No portion of this manual or any artwork contained herein may be reproduced in any shape or form without the express written consent of Harbor Freight Tools. Diagrams within this manual may not be drawn proportionally. Due to continuing improvements, actual product may differ slightly from the product described herein.

Tools required for assembly and service may not be included.

### **⚠ WARNING**

**Read this material before using this product.  
Failure to do so can result in serious injury.  
SAVE THIS MANUAL.**

## WARNING SYMBOLS AND DEFINITIONS

	This is the safety alert symbol. It is used to alert you to potential personal injury hazards. Obey all safety messages that follow this symbol to avoid possible injury or death.
	Indicates a hazardous situation which, if not avoided, will result in death or serious injury.
	Indicates a hazardous situation which, if not avoided, could result in death or serious injury.
	Indicates a hazardous situation which, if not avoided, could result in minor or moderate injury.
	Addresses practices not related to personal injury.

## IMPORTANT SAFETY INFORMATION

### General Tool Safety Warnings

#### **WARNING**

**Read all safety warnings and instructions.**  
*Failure to follow the warnings and instructions may result in electric shock, fire and/or serious injury. Save all warnings and instructions for future reference.*

1. KEEP GUARDS IN PLACE and in working order.
2. KEEP WORK AREA CLEAN.  
Cluttered areas and benches invite accidents.
3. DON'T USE IN DANGEROUS ENVIRONMENT.  
Don't use power tools in damp or wet locations, or expose them to rain. Keep work area well lighted.
4. KEEP CHILDREN AWAY. All visitors should be kept safe distance from work area.
5. MAKE WORKSHOP KID PROOF with padlocks, master switches, or by removing starter keys.
6. DON'T FORCE TOOL. It will do the job better and safer at the rate for which it was designed.
7. USE RIGHT TOOL. Don't force tool or attachment to do a job for which it was not designed.

**Table A: RECOMMENDED MINIMUM WIRE GAUGE FOR EXTENSION CORDS (120 VOLT)**

NAMEPLATE AMPERES (at full load)	EXTENSION CORD LENGTH			
	25'	50'	100'	150'
0 – 6	18	16	16	14
6.1 – 10	18	16	14	12
10.1 – 12	16	16	14	12
12.1 – 16	14	12	<b>Do not use.</b>	

8. USE PROPER EXTENSION CORD. Make sure your extension cord is in good condition. When using an extension cord, be sure to use one heavy enough to carry the current your product will draw. An undersized cord will cause a drop in line voltage resulting in loss of power and overheating. Table A shows the correct size to use depending on cord length and nameplate ampere rating. If in doubt, use the next heavier gauge. The smaller the gauge number, the heavier the cord.
9. WEAR PROPER APPAREL. Do not wear loose clothing, neckties, rings, bracelets, or other jewelry which may get caught in moving parts. Nonslip footwear is recommended. Wear protective hair covering to contain long hair.
10. ALWAYS USE SAFETY GLASSES. Also use face or dust mask if cutting operation is dusty. Everyday eyeglasses only have impact resistant lenses, they are NOT safety glasses.
11. SECURE WORK. Use clamps or a vise to hold work when practical. It's safer than using your hand and it frees both hands to operate tool.

- 12. **DON'T OVERREACH.**  
Keep proper footing and balance at all times.
- 13. **MAINTAIN TOOLS WITH CARE.** Keep tools sharp and clean for best and safest performance. Follow instructions for lubricating and changing accessories.
- 14. **DISCONNECT TOOLS** before servicing; when changing accessories, such as blades, bits, cutters, and the like.
- 15. **REDUCE THE RISK OF UNINTENTIONAL STARTING.** Make sure switch is in off position before plugging in.
- 16. **USE RECOMMENDED ACCESSORIES.**  
Consult the owner's manual for recommended

accessories. The use of improper accessories may cause risk of injury to persons.

- 17. **NEVER STAND ON TOOL.**  
Serious injury could occur if the tool is tipped.
- 18. **CHECK DAMAGED PARTS.** Before further use of the tool, a guard or other part that is damaged should be carefully checked to determine that it will operate properly and perform its intended function – check for alignment of moving parts, binding of moving parts, breakage of parts, mounting, and any other conditions that may affect its operation. A guard or other part that is damaged should be properly repaired or replaced.
- 19. **NEVER LEAVE TOOL RUNNING UNATTENDED. TURN POWER OFF.**

## Grounding Instructions

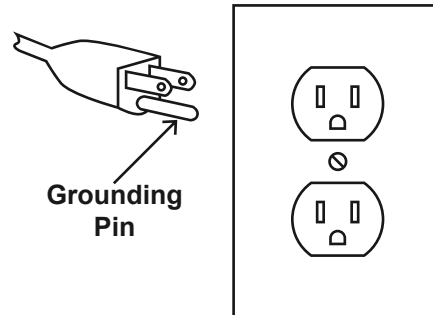


**⚠ WARNING**  
TO PREVENT ELECTRIC SHOCK AND

**DEATH FROM INCORRECT  
GROUNDING WIRE CONNECTION READ AND  
FOLLOW THESE INSTRUCTIONS:**

### 110-120 VAC Grounded Tools: Tools with Three Prong Plugs

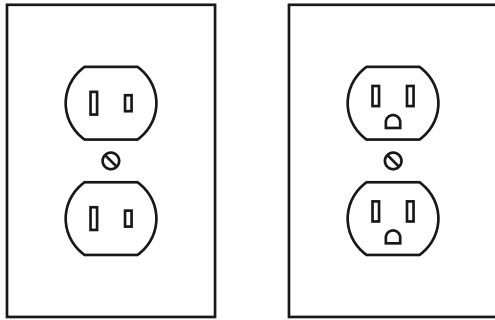
- 2. In the event of a malfunction or breakdown, grounding provides a path of least resistance for electric current to reduce the risk of electric shock. This tool is equipped with an electric cord having an equipment-grounding conductor and a grounding plug. The plug must be plugged into a matching outlet that is properly installed and grounded in accordance with all local codes and ordinances.
- 3. Do not modify the plug provided – if it will not fit the outlet, have the proper outlet installed by a qualified electrician.
- 4. Improper connection of the equipment-grounding conductor can result in a risk of electric shock. The conductor with insulation having an outer surface that is green with or without yellow stripes is the equipment-grounding conductor. If repair or replacement of the electric cord or plug is necessary, do not connect the equipment-grounding conductor to a live terminal.
- 5. Check with a qualified electrician or service personnel if the grounding instructions are not completely understood, or if in doubt as to whether the tool is properly grounded.
- 6. Use only 3-wire extension cords that have 3-prong grounding plugs and 3-pole receptacles that accept the tool's plug.
- 7. Repair or replace damaged or worn cord immediately.



**125 VAC 3-Prong Plug and Outlet  
(for up to 125 VAC and up to 15 A)**

- 8. This tool is intended for use on a circuit that has an outlet that looks like the one illustrated above in “**125 VAC 3-Prong Plug and Outlet**”. The tool has a grounding plug that looks like the plug illustrated above in “**125 VAC 3-Prong Plug and Outlet**”.
- 9. The outlet must be properly installed and grounded in accordance with all codes and ordinances.
- 10. Do not use an adapter to connect this tool to a different outlet.

# 110-120 VAC Double Insulated Tools: Tools with Two Prong Plugs




Outlets for 2-Prong Plug

2. To reduce the risk of electric shock, double insulated equipment has a polarized plug (one blade is wider than the other). This plug will fit in a polarized outlet only one way. If the plug does not fit fully in the outlet, reverse the plug. If it still does not fit, contact a qualified electrician to install the proper outlet. Do not change the plug in any way.
3. Double insulated tools may be used in either of the 120 volt outlets shown in the preceding illustration. (See “Outlets for 2-Prong Plug”.)

## Tool Safety Warnings

### For Your Own Safety Read Instruction Manual Before Operating Tool

1. Use only water-based solvents. Do not use caustic, volatile, or combustible solvents, such as gasoline or toluene.
2. Do not allow smoking or other ignition sources nearby.
3. Parts being cleaned may leave flammable or combustible residue, or may contain combustible fluids that remain in washer. Replace fluid and clean parts washer regularly.
4. Follow instructions provided with solvents.
5. Use only in well-ventilated area. Locate washer at least 18 inches above floor.
6.  Do not expose to combustible fumes. Washer has internal arcing or sparking parts that can cause ignition.
7. Immerse pump during use. Do not operate washer without enough solvent
8. Maintain labels and nameplates on the tool. These carry important safety information. If unreadable or missing, contact Harbor Freight Tools for a replacement.
9. Do not leave the tool unattended when it is plugged into an electrical outlet. Turn off the tool, and unplug it from its electrical outlet before leaving.
10. This product is not a toy. Keep it out of reach of children.
11. People with pacemakers should consult their physician(s) before use. Electromagnetic fields in close proximity to heart pacemaker could cause pacemaker interference or pacemaker failure. In addition, people with pacemakers should:
  - Avoid operating alone.
  - Properly maintain and inspect to avoid electrical shock.
  - Any power cord must be properly grounded. Ground Fault Circuit Interrupter (GFCI) should also be implemented – it prevents sustained electrical shock.
12. **WARNING:** The cord of this product contains lead and/or di (2-ethylhexyl) phthalate (DEHP), chemicals known to the State of California to cause cancer, and birth defects or other reproductive harm. Wash hands after handling. (California Health & Safety Code § 25249.5, *et seq.*)
13. **WARNING:** This product contains di (2-ethylhexyl) phthalate (DEHP), a chemical known to the State of California to cause cancer and birth defects or other reproductive harm. (California Health & Safety Code § 25249.5, *et seq.*)
14. The warnings, precautions, and instructions discussed in this instruction manual cannot cover all possible conditions and situations that may occur. It must be understood by the operator that common sense and caution are factors which cannot be built into this product, but must be supplied by the operator.



**SAVE THESE INSTRUCTIONS.**

## Specifications

Electrical Requirements	120 VAC / 60 Hz / 0.27A
Maximum Flow	15 Gallons per Hour
Power Cord	18AWGX3C

## Operating Instructions



Read the **ENTIRE IMPORTANT SAFETY INFORMATION** section at the beginning of this manual including all text under subheadings therein before set up or use of this product.

### **⚠️ WARNING**

Do not use any highly volatile, flammable or combustible solvents, or fuels such as gasoline, diesel, or toluene. Use only non-corrosive water based solvents.

### **⚠️ WARNING**

Parts being cleaned may contain and leave flammable or combustible residue or fluids in the Parts Washer. Check for solvent fumes to verify nonflammability and non-toxicity. Use in a well ventilated area. Do not smoke. Always dispose of solvents properly.

1. Place the Parts Washer in a well ventilated area on a surface capable of bearing the combined weight of the unit, solvent, and parts.
2. Read all manufacturer directions for the solvent and follow the guidelines for use.
3. Add the correct solvent for the application at hand until the Pump (3) is entirely submerged.
4. Carefully place the Shelf (2) into the Solvent Bin, and place the parts to be cleaned on the Shelf (2).
5. Plug the Parts Washer into a grounded 120V electrical outlet. Wearing protective gear, turn the Power Switch on, and direct the Spigot (1) to clean the products.

### **⚠️ WARNING**

Only use with non-flammable mild solvents, detergents and biodegradable degreasers. Other solvents chemically react with the components of this machine and cause an explosion.

6. Once all parts have been cleaned, turn the Power Switch off and unplug the electrical cord.
7. Dispose of the solvent as required by any State, local, or Federal guidelines and regulations. See the directions on the solvent, or contact the local Hazardous Waste Disposal Authorities.
8. Clean, then store the tool indoors out of children's reach.

## Maintenance And Servicing

**⚠ WARNING** Risk of serious personal injury from accidental starting or electric shock. Turn the Power Switch of the tool to its “OFF” position and unplug the tool from its electrical outlet before performing any inspection, maintenance, or cleaning procedures.

Damaged equipment can fail, causing serious personal injury. Do not use damaged equipment. If abnormal noise or vibration occurs, have the problem corrected before further use.

1. **BEFORE EACH USE**, inspect the general condition of the tool. Check for loose screws, misalignment or binding of moving parts, cracked or broken parts, damaged electrical wiring, and any other condition that may affect its safe operation.
2. **AFTER USE**, clean external surfaces of the tool with clean, moist cloth.
3. **WARNING!** If the supply cord of this power tool is damaged, it must be replaced only by a qualified service technician.

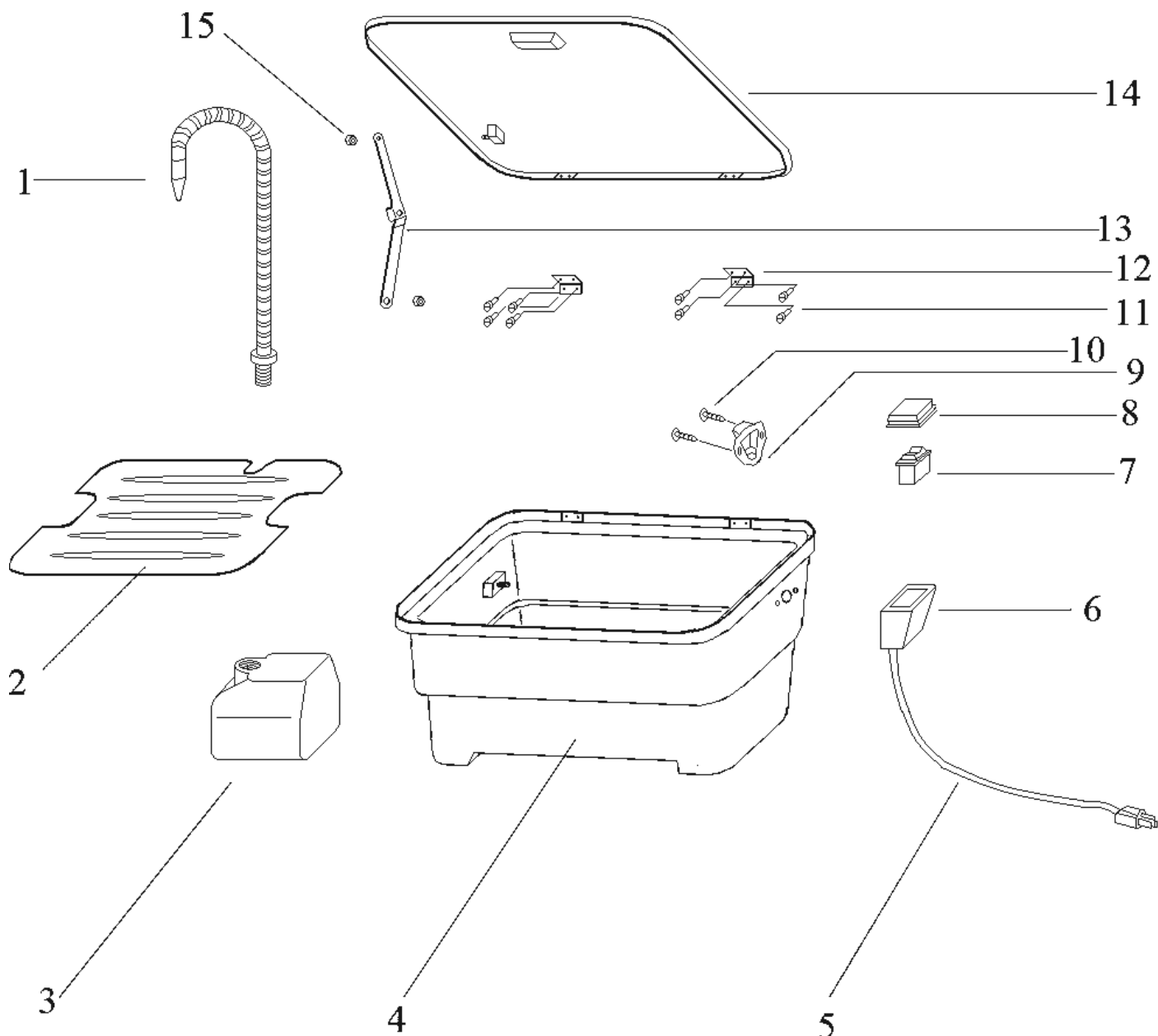
### **PLEASE READ THE FOLLOWING CAREFULLY**

THE MANUFACTURER AND/OR DISTRIBUTOR HAS PROVIDED THE PARTS LIST AND ASSEMBLY DIAGRAM IN THIS MANUAL AS A REFERENCE TOOL ONLY. NEITHER THE MANUFACTURER OR DISTRIBUTOR MAKES ANY REPRESENTATION OR WARRANTY OF ANY KIND TO THE BUYER THAT HE OR SHE IS QUALIFIED TO MAKE ANY REPAIRS TO THE PRODUCT, OR THAT HE OR SHE IS QUALIFIED TO REPLACE ANY PARTS OF THE PRODUCT. IN FACT, THE MANUFACTURER AND/OR DISTRIBUTOR EXPRESSLY STATES THAT ALL REPAIRS AND PARTS REPLACEMENTS SHOULD BE UNDERTAKEN BY CERTIFIED AND LICENSED TECHNICIANS, AND NOT BY THE BUYER. THE BUYER ASSUMES ALL RISK AND LIABILITY ARISING OUT OF HIS OR HER REPAIRS TO THE ORIGINAL PRODUCT OR REPLACEMENT PARTS THERETO, OR ARISING OUT OF HIS OR HER INSTALLATION OF REPLACEMENT PARTS THERETO.

## Parts List and Diagram

Part	Description	Qty
1	Spigot	1
2	Shelf	1
3	Pump	1
4	Tank	1
5	Power Cord	1
6	Switch Cover	1
7	Power Switch	1

8	Switch Protector	1
9	Cord Cover	1
10	Screw	2
11	Rivet	8
12	Hinge	1
13	Lid Supporter	1
14	Lid	1
15	Nut	2



**Record Product's Serial Number Here:** \_\_\_\_\_

**Note:** If product has no serial number, record month and year of purchase instead.

**Note:** Some parts are listed and shown for illustration purposes only, and are not available individually as replacement parts.

## Limited 90 Day Warranty

Harbor Freight Tools Co. makes every effort to assure that its products meet high quality and durability standards, and warrants to the original purchaser that this product is free from defects in materials and workmanship for the period of 90 days from the date of purchase. This warranty does not apply to damage due directly or indirectly, to misuse, abuse, negligence or accidents, repairs or alterations outside our facilities, criminal activity, improper installation, normal wear and tear, or to lack of maintenance. We shall in no event be liable for death, injuries to persons or property, or for incidental, contingent, special or consequential damages arising from the use of our product. Some states do not allow the exclusion or limitation of incidental or consequential damages, so the above limitation of exclusion may not apply to you. THIS WARRANTY IS EXPRESSLY IN LIEU OF ALL OTHER WARRANTIES, EXPRESS OR IMPLIED, INCLUDING THE WARRANTIES OF MERCHANTABILITY AND FITNESS.

To take advantage of this warranty, the product or part must be returned to us with transportation charges prepaid. Proof of purchase date and an explanation of the complaint must accompany the merchandise. If our inspection verifies the defect, we will either repair or replace the product at our election or we may elect to refund the purchase price if we cannot readily and quickly provide you with a replacement. We will return repaired products at our expense, but if we determine there is no defect, or that the defect resulted from causes not within the scope of our warranty, then you must bear the cost of returning the product.

This warranty gives you specific legal rights and you may also have other rights which vary from state to state.

